



Twin Pack Wireless Plug-in Doorbell with LED Alert

Order ref: 350.315UK – white, 350.316UK - black

User Manual

A stylish, wireless doorbell set, providing an innovative way to be alerted to visitors. Choose from 38 different ring tones and melodies which notifies via 2 compact plug-in chimes with LED light alert. The chimes operate as twin receivers and can be plugged into different rooms within the wireless range, giving you flexibility to place throughout the home or office.

Specification:

Frequency	433.92MHz+100KHz
Range	Up to 150m (clear line of sight)
Volume	80dB<90dB (within 0.5m)
IP Rating	IP44 (remote only)
Power supply: receiver	AC 100~240V
Battery: transmitter	CR2032 DC3V (supplied)
Dimensions:	90 x 85 x 50mm (Receiver); 80 x 45 x 18mm (Transmitter)
Weight:	87g (Receiver); 33g (Transmitter)

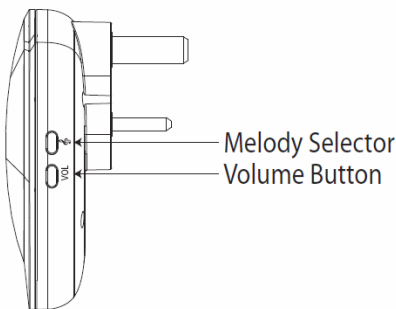
Features:

- Stylish modern design with LED light alert
- Simple wire-free installation
- Auto-learn pairing function
- Choice of 38 ring tones and melodies
- Can also be used as an assistance button for the elderly

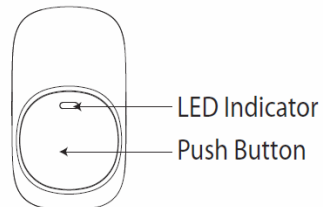
In the box:

- 2pcs Plug-in receiver
- Remote transmitter
- CR2032 battery (for transmitter)
- Self-adhesive pad (for transmitter)
- User manual

Product diagram:

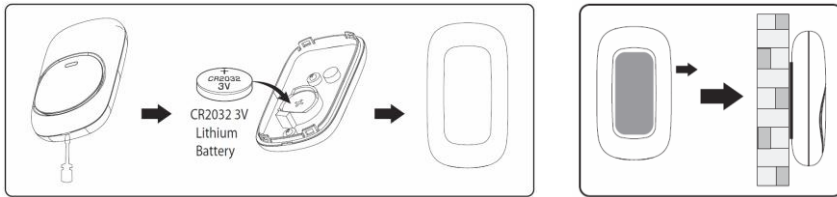


Receiver



Transmitter

Installation:



1. To begin with, insert the CR2032 battery (supplied) into the transmitter by removing the small screw on the back of the unit using a Philips screwdriver. Next insert a small flat bladed screwdriver into the slot on the bottom of the unit and pop the back cover off. Insert the battery ensuring the positive side is facing upwards, then replace the back cover and securing screw.
2. Fix the transmitter on your door or doorframe securely using the self-adhesive pad provided, ensuring it's in an area that's not too open to the elements and as close to the receiver location as possible (max distance 150m).
3. Plug the first receiver into an available mains socket in your desired location and switch on. The receiver will now enter learning mode and search for a unique frequency that won't be interfered with by any other wireless devices in the area.
4. Select your desired melody by pressing the melody selection button repeatedly, there are 38 different melodies to choose from.
5. You can also adjust the unit volume by repeatedly pressing the volume button on the side of the receiver. There are 3 levels to choose from, high, medium and low.
6. Then plug the second receiver into your second desired location and repeat steps 3 to 5 above.
7. Finally, press the transmitter to pair directly with the installed receivers. The transmission range is up to 150m, but this distance can be significantly reduced by obstructions such as walls, doors, floors etc. If the receiver ringtones can't be heard, ensure they are both set up correctly and try again. In rare instances it may be necessary to move a receiver to a new location if it cannot be paired correctly with the transmitter.

NOTE: You must set your desired melody first before pairing with the transmitter. If you want to change the melody after pairing has taken place, you must switch off the power on both receivers to clear the memory and repeat from step 3 above.

If a receiver sounds at any time without anyone pressing the transmitter, there may be another wireless device close by on the same frequency causing interference. In this instance, switch off the power on both receivers to clear the memory and repeat from step 3 above.

Warning:

- For reasons of electrical safety, this device must never be immersed in water, exposed to damp conditions or excessive force.
- Do not use this device if you find that it is damaged in any way.
- Do not attempt to repair this device or take apart under any circumstances, as this will invalidate your warranty.



This product is classed as Electrical or Electronic equipment and should not be disposed with other household or commercial waste at the end of its useful life. The goods must be disposed of according to your local council guidelines.

*Errors and omissions excepted.
Copyright© 2019. AVSL Group Ltd.*